



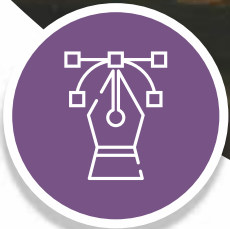
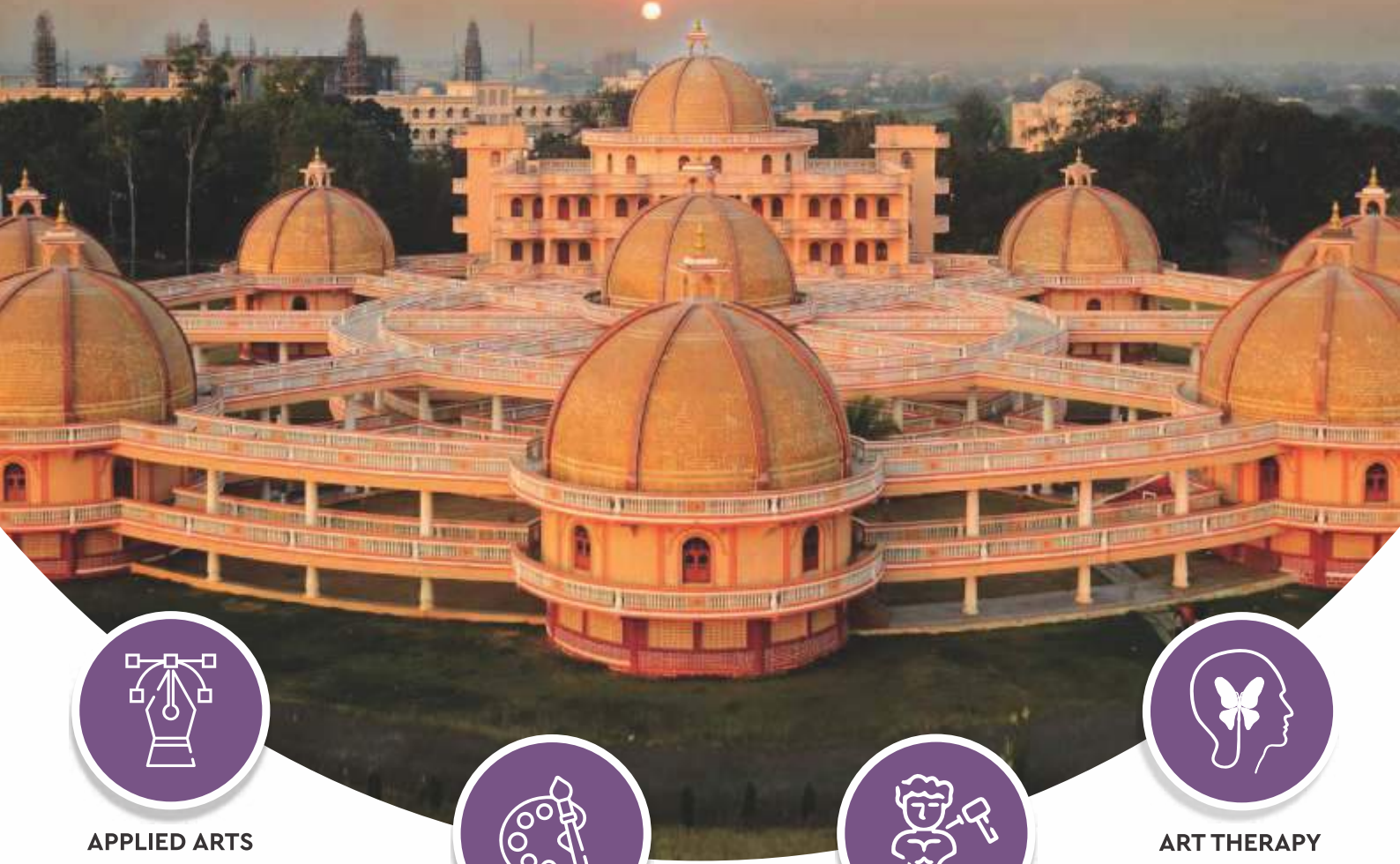
MIT School of Fine Arts  
& Applied Arts



MIT-ADT  
UNIVERSITY  
PUNE, INDIA  
A leap towards World Class Education

# ELEVATED IDEAS LASTING IMPRESSIONS

2023-2024



APPLIED ARTS



PAINTING



SCULPTURE



ART THERAPY

01

ABOUT

MIT ART, DESIGN & TECHNOLOGY UNIVERSITY

MIT Group of Institutions, Pune is one of the most prestigious groups in the academic sector known for its unique blend of value-based professional education in the areas of Technology, Medicine & Health Care, Schools, Management & so on. Maharashtra Institute of Technology, the flagship institute of MIT Group of institutions, Pune was established in the year 1983, under the aegis of Maharashtra Academy of Engineering and Educational Research or better known as MAEER, Pune.

MIT is one of the first nine private Engineering institutions in Maharashtra. It is the culmination of Hon'ble Dr. Vishwanath D.Karad's vision, the Founding Father of MIT Group of Institutions, Pune that quality education should reach asses and be made available to every merit holder irrespective of one's class, creed or religion.

The four-decade long journey of MAEER's MIT epitomizes the relentless pursuit of quality and excellence in the name of commitment and dedication, the nutriment of value and discipline, the quest of science and spirituality and in the enrichment of research and education. The academicians associated with MIT ADT are committed not only to imparting knowledge but also augment the proficiency in their various fields. MIT guides students to achieve their dreams and potential in this multi- disciplinary institute that weaves a mosaic of integrity, commitment and dedication. Carrying forward the baton of a new tomorrow and contributing to the industrial and economic growth of the society and nation at large, MAEER's MIT continues to build the gateway to student successful careers.

MIT Art Design and Technology University (MITADT University), with its motto, a leap towards world class education, is established by the renowned MIT Group of Institutions. It is a UGC recognised multi- disciplinary University located on the 125 acres of campus at Raj Baugh, Loni Kalbhor, which was previously owned by late legendary actor of Indian Hindi Cinema Raj Kapoor.

The University campus is an embodiment of peace, serenity and tranquillity; aesthetically erected on the banks of Mula-Mutha river with its architecture ideation inspired from matrix of Saptarishi, Saptarang and Saptaswar. The magnificent world class state-of-the-art infrastructure equipped with modern amenities , is a fully residential campus facility that leads MIT ADT University to be one of the premium campuses.

MIT ADT University is a multi- disciplinary University which offers programs at under graduate, post graduate and doctorate level in Fine Arts, Design, Conventional Engineering branches in Information Technology, Computer Science and Engineering, Mechanical, Civil, Aerospace Engineering Management, Marine Engineering, Bioscience Engineering, Food Technology, Film and Television as well as Broadcasting and Journalism and in Education as well. Most of the programs are designed to satisfy the current needs of the specific industry.

With a vision of Holistic Development, the University has designed compulsory core credits to foster the complete campus transformation of students as winning personalities or corporate leaders, social transformers & nation builders.

**4 DECADES OF  
ACADEMIC EXCELLENCE**

**69,000+ STUDENTS/YEAR**

**83+ INSTITUTIONS**

**1,55,000+ ALUMNI**

02

VISION AND MISSION OF  
MIT ART, DESIGN & TECHNOLOGY UNIVERSITY

## VISION

Promotion of creative arts through innovation and research to meet global standards.

## MISSION

To create a world-class innovative artist, who can lead the creative industry at globally. Collaborations with the Industry to bridge the Gap between Industry and Academics. To produce creative designers for effective communication to serve the society.

RANKED

**26<sup>th</sup>**

IN ARIIA - ATAL RANKING  
ON INSTITUTION'S  
INNOVATION  
ACHIEVEMENT 2020

RANKED

**TOP**

PRIVATE UNIVERSITY  
IN INDIA UNDER  
ENGG. CATEGORY

**5 STAR RATING**



BY MINISTRY OF EDUCATION  
GOVT. OF INDIA TO  
INSTITUTION'S INNOVATION  
COUNCIL MIT-ADTU, Pune



**BEST UNIVERSITY  
CAMPUS**

Awarded by  
ASSOCHAM, New Delhi







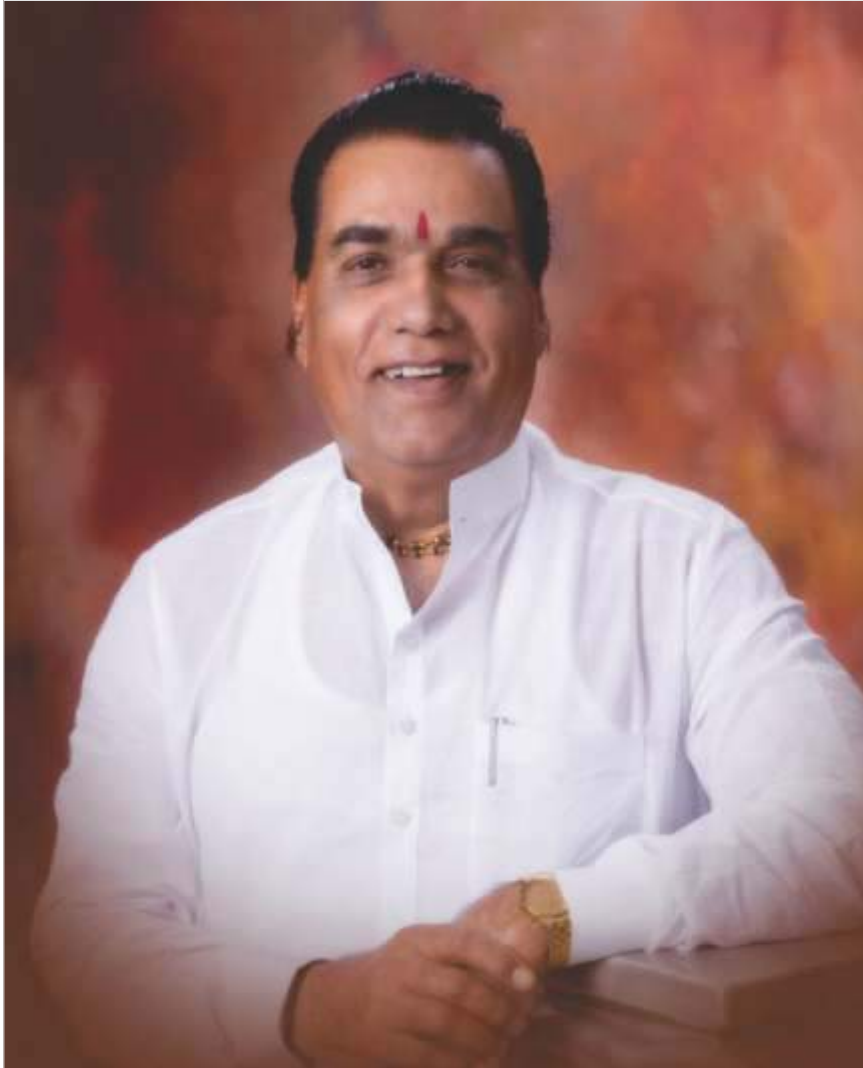


03

OUR SOURCE OF INSPIRATION



# OUR SOURCE OF INSPIRATION



## **Hon'ble Prof. Dr. Vishwanath D. Karad**

Founder, MAEER's MIT Group of Institutions, Pune  
President, MIT Art, Design & Technology University, Pune, India

---

MIT Art Design and Technology University (MIT ADT University) is a place where creativity and innovation coexist. MIT ADT has been established under the flagship of the prestigious MIT Group of Institutions. It is a UGC recognized multidisciplinary University and has been bestowed with the 'Best Campus Award' by ASSOCHAM.

MIT ADT spans across a vast green stretch of 125 acres of land at Vishwaraj Baugh Loni, Kalbhor, Pune.



**Prof. Dr. Mangesh T. Karad**  
**Executive President & Vice Chancellor**  
**MIT Art, Design & Technology University, Pune**

Dr Mangesh Karad, a towering personality with exceptional leadership qualities demonstrates remarkable vigor and zeal at every task that he undertakes here at MIT-ADT University. The field of Art & Design and its related disciplines have seen revolution since the emergence and integration of technology in the learning curve and has been at the center in propelling education to new levels. MIT ADT offers a large number of programs both at the Under-graduate, Post-graduate levels and PhD levels. MITADT University, a leading futuristic multi-disciplinary University with a unique blend of Art, Design & Technology programmes, prepares students for the future through its cutting-edge programmes and grooms them for their prospective workplaces through holistic education.

"I heartily welcome you to this new generation University where all your dreams & aspirations will be fulfilled and where the pursuit of excellence begins.



**Prof. Dr. Anant Chakradeo**  
**Pro-Vice Chancellor**  
**MIT-ADT University, Pune**

Prof. Dr. Anant is a hardcore Engineering Postgraduate having a good innovative mind. A person with a very cool head on his young shoulders is known for his innovative and creative ideas in education. After spending 6 years in small and medium scale industry, he joined MIT in 1993. He has also worked on many industrial projects dealing with tool design, product design and development. He has visited Italy, France, Germany, China and Malaysia for attending various conferences and meetings. He has habit of Dreaming about the new ventures and through his hard-work he conceptualizes those nicely and effectively. In-fact MIT ID is the brain child of Prof. Anant. He further aims to establish a 'Design Habitat' which will have facilities of learning in the areas of Fine arts, Design, Architecture. He also has plans to start giving services to the industry and society in these areas through 'MIT Industrial Design Centre'.





**Mrs. Jyoti Dhakne**  
**Executive Director**  
MIT-ADT University, Pune

She is a woman of distinct vision and a fountain head of illuminating ideas.

We, at MIT School of Fine Arts and Applied Arts, are determined to provide every individual the creative and technical skills needed to thrive in today's art and communication world. MIT has been nurturing technology for last 40 years and this institute has created its bench mark in this field. Here, you will start by mastering the foundations necessary to compose, design, draw, paint, sculpt as you broaden your artistic point of view and define your vision in the field of art. The recognition for the University has fueled inception of many other specialised and novel programs such as Aerospace Engineering, Architectural Design, Project Construction, Infrastructure Management, Energy Engineering and Vedic Studies. The multi-disciplinary campus is a true reflection of the beliefs and values imbibed by the Father Founder Prof. Dr. Vishwanath D. Karad.



## **Prof. Dr. Milind Dhobley**

### **Dean**

**Faculty of Arts, Fine Arts & Performing Arts  
MIT-ADT University, Pune**

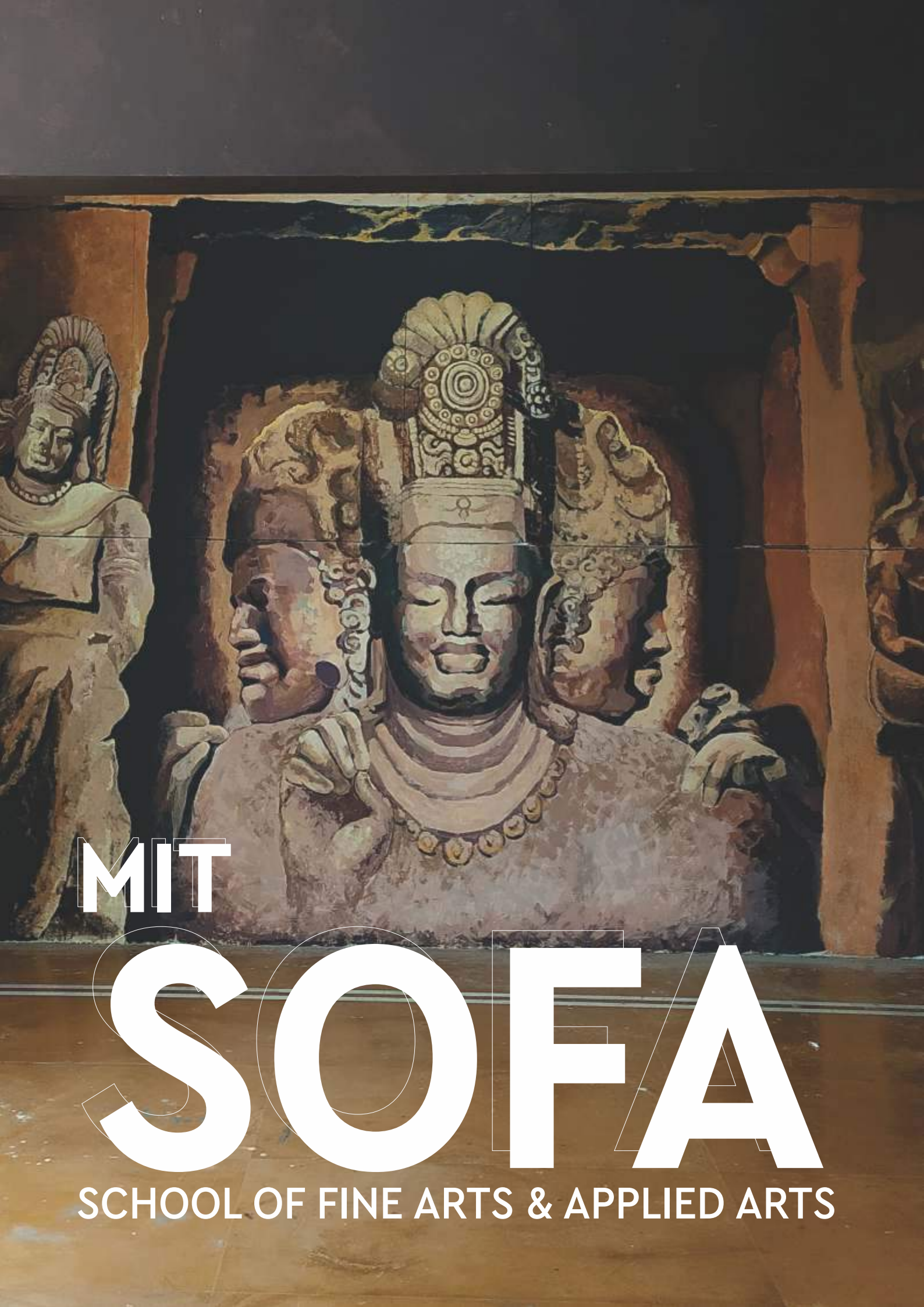
As the Dean of Faculty of Arts, Fine Arts and Performing Arts, it gives me great pleasure to welcome creative students to our esteemed organization. A highly engaged artistic vision has been at the core of the work and identity of MIT Art Design and Technology University, since its inception. We are committed to the principle that the opportunities and problems associated with this emerging paradigm are complex and best approached from a variety of disciplinary standpoints. Faculty of Fine Arts and Performing Arts is collaborating with all the faculties in the University to ensure that every student gets the best possible interdisciplinary education and experience. Our main motto is to educate and train aspirants to work in the fields where they will be valued both for their knowledge, skills, and for their ability to communicate and solve problems. We proudly state that our students will make a prominent mark in the field of Arts and performing arts education and will be nurtured to grow aesthetically, intellectually, culturally, and spiritually.

04

ABOUT

MIT SCHOOL OF FINE ARTS & APPLIED ARTS





MIT

# SOFA

SCHOOL OF FINE ARTS & APPLIED ARTS



## MIT SCHOOL OF FINE ARTS & APPLIED ARTS

MIT School of Fine Arts & Applied Arts, aims at providing the highest standard of art & design education so that students gain a strong foundation in the artistic tradition via both established & new media, thus enriching their capacity for communication & expression as a whole. Our vision is to help students think, research, & communicate clearly, equipping them with intellectual skills & academic abilities to develop a stimulating & rewarding career. It offers an incredible array of academic programs; a diverse, committed, & accessible faculty; sophisticated facilities; & an unusual emphasis on experiential learning and project-based learning.



# FACULTY - SOFA



**Tushar Panke**  
HOD APPLIED ARTS



**Mahendra Potdar**  
HOD FINE ARTS



**Dnyaneshwar Jagadale**  
ASSO. PROFESSOR



**Shilkumar Kumbhar**  
ASST. PROFESSOR



**Prasad Nikumbh**  
ASST. PROFESSOR



**Avni Jindal**  
ASST. PROFESSOR



**Dipankar Goswami**  
ASST. PROFESSOR



**Uttam Janwade**  
ASST. PROFESSOR



**Nitin Jaswal**  
ASST. PROFESSOR



**Swapnil Bhamare**  
ASST. PROFESSOR



**Mandar Pardikar**  
ASST. PROFESSOR



**Prasad Pawar**  
ASST. PROFESSOR



**Mukta Pusalkar**  
ASST. PROFESSOR



**Anjali Bhamare**  
ASST. PROFESSOR



**Bhagyashree Manjrekar**  
ASST. PROFESSOR



**Geetanjali More**  
ASST. PROFESSOR



**Tashi Bahuguna**  
ASST. PROFESSOR



**Smita Deshpande**  
ADJ. PROFESSOR



**Sachin Kelkar**  
ADJ. PROFESSOR



**Pragati Adhikari**  
ADJ. PROFESSOR



# PROGRAMMES OFFERED



## Applied Arts: Visualize the Future



A specially designed curriculum helps you enhance your drawing skills and prepares you to understand the conceptual, creative process underlying courses that balance visual exploration, theory, applications, and technical design skills. A balance of visual exploration, theory and applied projects will enable you to explore creative and effective visual design solutions and will lead you to exciting career opportunities. We help you find solutions in branding, copywriting, graphic design, photography, motion graphics, interaction design, packaging, 3D design, web design, information design, unconventional advertising, design in advertising, ideation, and innovation in visual communication.



## Painting: Repaint the World



The range of innovative programs offered in MIT School of Fine Arts and Applied Arts gives you a panoramic perspective opening the floodgates for new methods of visual communication and expression. Here you can create art using centuries-old methods or by pushing the boundaries of digital creativity. From Conceptual Art to Contemporary Fine Art, you are taught how to present your finished pieces using a mixed range of media. You work in well-equipped, modern classrooms, studios, and have numerous opportunities to exhibit your work on campus (in a variety of galleries and student shows) or off-campus at State and National level. Example skills learned include Painting and Drawing, Sculpture, Printmaking and portraiture.



## Sculpture: Shape the Future



The Sculpture program establishes a framework that encompasses the material, historical & theoretical conditions of sculpture where students are supported to develop their own practice. Our purpose-built studios serve as both working studios and exhibition spaces. Sculpture staff members are engaged in a wide range of research interests that feed into the teaching spectrum and this enhances & informs the discussions around the making and exhibiting of work produced by students. We believe in a very open approach to what is considered sculpture within the field of contemporary art and encourage you to work at the margins of the discipline as well as at the core.



## Art Therapy: Creativity with self-discovery



In alignment with our visionary commitment to the promotion of creative arts through innovation and research, our mission at MIT SOFA is clear and resolute. Completing the Master of Fine Art (Art Therapy) program equips graduates with a commitment to human values, foundational knowledge of art therapy theory, advanced clinical skills, cultural competency, and ethical practice. They cultivate heightened self-awareness, apply research in clinical settings, and demonstrate career readiness with adaptability. A global outlook is comprehended, and graduates actively engage in community through art therapy principles. Applying working knowledge of imagery and creativity, they harness artistic processes to express challenges and strengths.



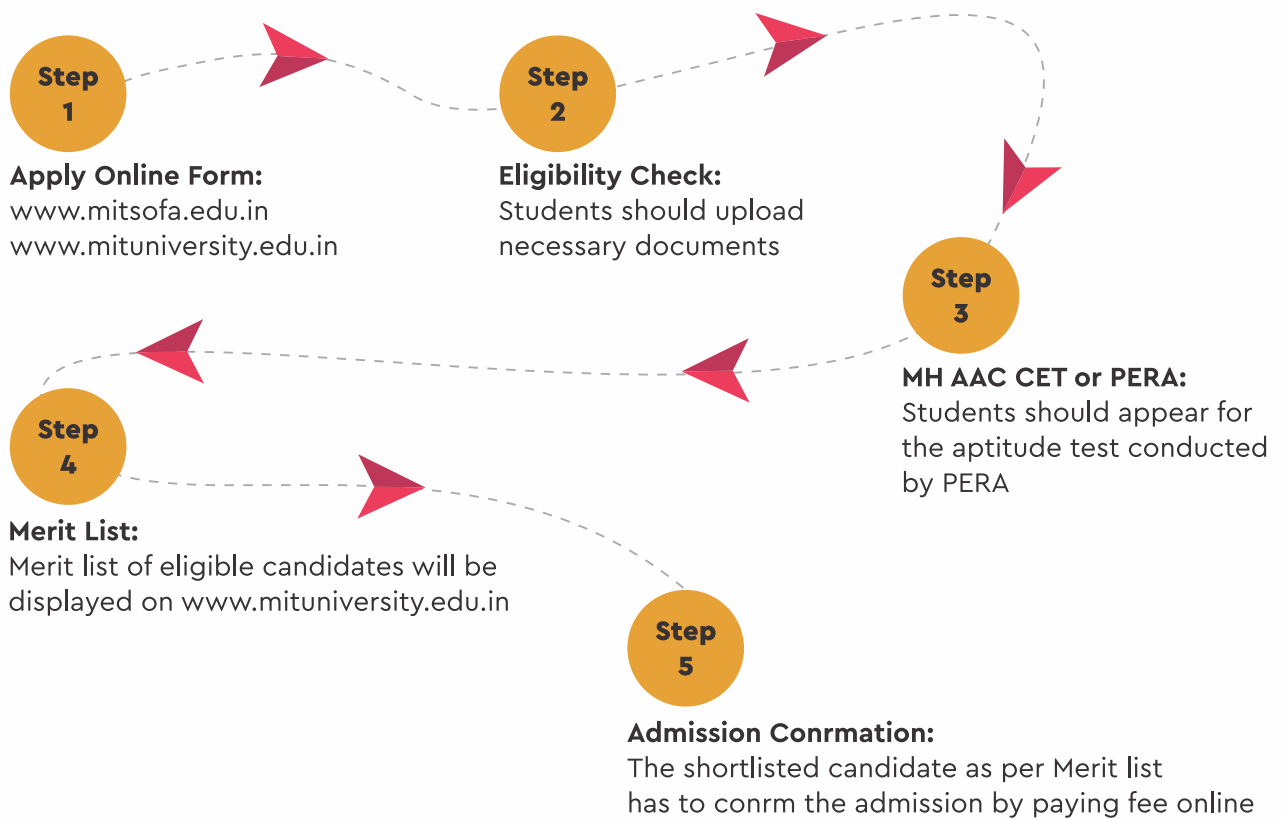






# PROGRAMMES OFFERED, FEE, ELIGIBILITY

Programs	Intake	Duration
BFA - Applied Arts   Painting   Sculpture	90	4 years
MFA - Applied Arts   Painting   Sculpture	45	2 years
MFA - Art Therapy	20	2 years



## Admission Document List

Students should submit following documents in ORIGINAL along with 2 Sets of photocopies at the time of admission

- 1) 1 : 2 passport size photograph
- 2) Application form hard copy\*
- 3) Acknowledgement received by MIT ADT for payment of form fees\*
- 4) 10th Mark sheet/certificate\*
- 5) 12th Mark sheet/certificate\*
- 6) Leaving certificate\*
- 7) CET mark sheet (for those who have appeared in MH-AAC-CET)
- 8) Aadhar card \*
- 9) Domicile\*
- 10) Caste certificate (If applicable below doc can be submitted)
- 11) Non-creamy layer certificate
- 12) Caste Validity certificate
- 13) Migration for OMS (Other than Maharashtra States) students\*

## Cancellation Policy

Notes:

- 1) 10% of the aggregate fee will be charged as processing charges & will be deducted from the refundable amount.
- 2) Any instrument/equipment/gadget or books & stationery purchased from/through the Institute is not refundable.
- 3) In case of any dispute regarding this fee policy, the decision of the Vice Chancellor of MIT-ADT University would be final & binding.
- 4) If the student has taken admission by paying token amount & subsequently apply for cancellation of admission, then the concerned student has to pay the deficit amount, if any, of refund fees percentage, then only the original documents will be returned.

## Syllabus

MITSoFA offers a dynamic and well-structured credit based syllabus that is at par with industry standards. At MIT SOFA, we offer experiential project-based learning and career-oriented courses to learning graduates which include internships, interdisciplinary studies, electives and research. Further, the syllabus is prepared in consultation with esteemed senior members from different industries to align with present industry requirements. Our vision is to help students think, research, and communicate clearly, equipping them with intellectual skills and academic abilities to develop a stimulating and rewarding career.

## School of Holistic Development(SHD)

MIT ADT University (MIT ADTU) endeavours to provide world class, value based high quality education through all its constituents. MIT ADT University aims to create and nurture the dynamic personality of student to build winning personalities and comprehensive global professionals enabling them to meet challenges of career as well as life with skills, sensibility and sense of responsibility towards society and humanity. School of Holistic Development emphasizes on enhancing employability of students by building skills, competencies & multiple intelligence, character, values of life through integral education in five dimensional approach to prepare the students for career and life by empowering them to contribute remarkably to society and practice.

05

MIT-SOFA

INDIAN TRADITIONAL STUDY TOUR

# INDIAN TRADITIONAL STUDIES

An ITS is defined as an On-campus/off-campus activity, undertaken by students along with faculty for the purposes of teaching/research the cycle of business /transactions /activities. This can range from low involvement visits to places within the local area(Within University, Printing press, Industry visits etc.) to taking part in higher involvement activities, overnight stays, traveling within country/abroad, or a combination of these. Indian Traditional Studies employs a holistic approach that consciously applies a methodology from more than one discipline (integration) to examine social, moral, spiritual, cultural and creative art forms in a micro environment and enables students to engage with and explore visual, tactile and other sensory experiences and how to recognize, interrelate and communicate ideas and meanings.





ITS-BHILWARA, RAJASTHAN





ITS-RAGHURAJPUR, ORISSA









# ITS-ITALY





07

MIT-SOFA  
KAARI ART EXHIBITION

# kaari कारि

## Kaari - Art Exhibition

Kaari, in Sanskrit, means "Artist". KAARI is an Annual Art Exhibition in which students are encouraged to display their talent and demonstrate their position and capabilities as young and emerging artists and visual communicators of India. Our vision behind Kaari is to give our visitors an insight into the minds of young creative artists, their interesting thought processes and equally interesting outcomes. Kaari is a great opportunity to appreciate new talent and offers a great arena for students to explore their ideas that have emerged through re-visiting our traditional and cultural practices, from investigating contemporary thinking on paintings and designs and from more open, speculative, imaginative and artistic visions of the future.











विश्वारंभ कला पुरस्कार

MIT School of Fine Arts & Applied Arts



2

Colour Sp

Canv



09

MIT-SOFA  
WORKSHOP



## Workshop on Infographics



## Workshop on Illustrations





## Workshop on Illustrations



Faculty and Students with German Illustrator Mr. Alyuscha Blau

## Workshop on Calligraphy



Calligraphy Workshop by Mr. Achyut Palav



## Workshop on Creativity in Advertising



## Workshop on Conservation of Art



10

MIT-SOFA  
EVENTS



## Sports





Persona





## Facilities



Spacious Studio



Well Equipped Computer Lab



State of Art Library



Hostel



Canteen / Mess



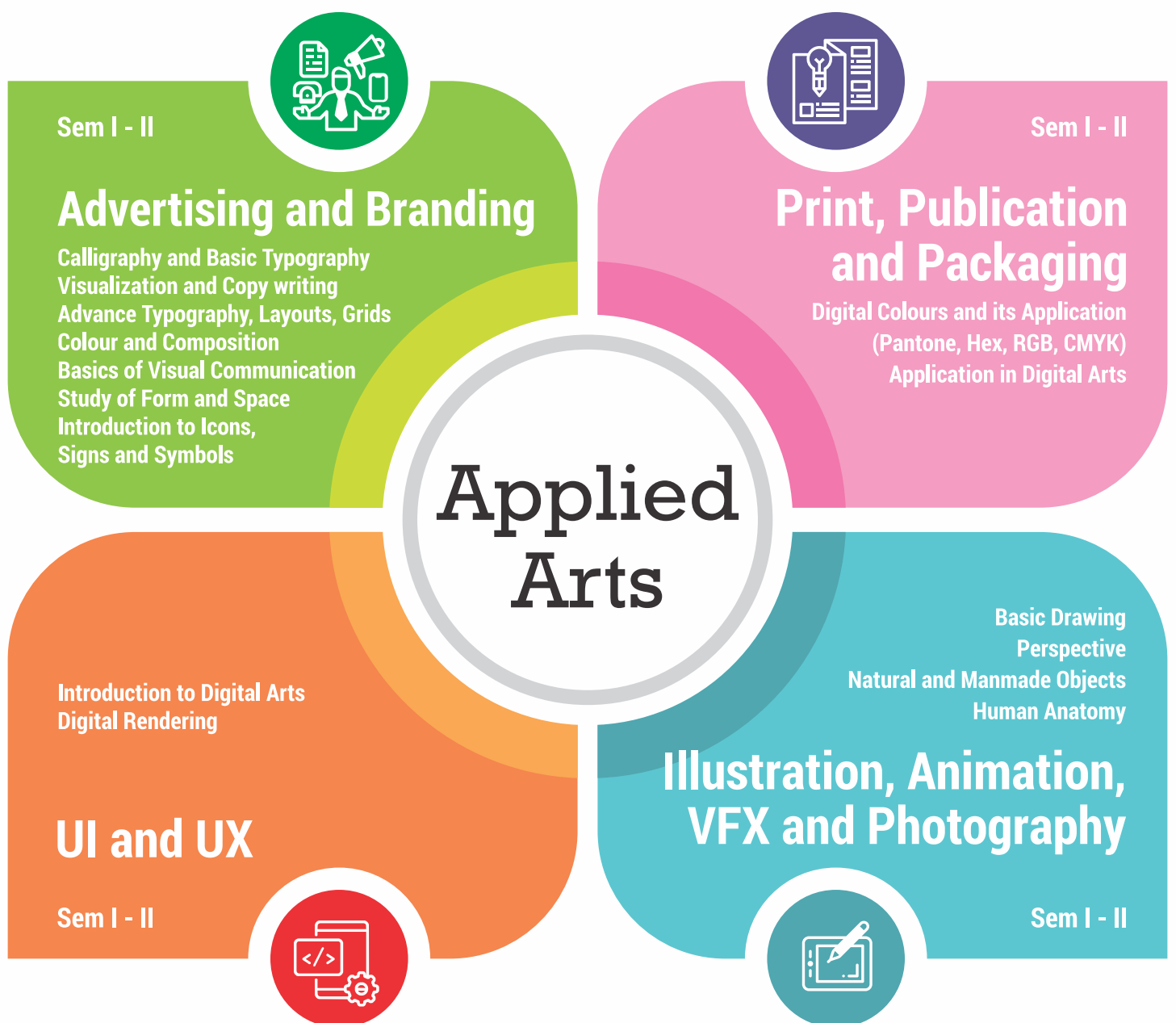
Sports Complex



Transportation



## Programs Offered At A Glance





## Print Making

Sem I - II

Introduction  
Relief and Dry Point  
Engraving and Etching  
Viscosity and Serigraph



Sem I - II

## Creative Painting

Colour & Composition  
Study of Form & Space  
Digital Arts  
3D Design  
Calligraphy  
History of Arts  
Aesthetics



Sem I - II

## Portrait Painting

Drawing  
Study From Life  
Drawing From Nature  
History of Arts  
Aesthetics

# Painting Fine Arts Sculpture

Colour & Composition  
Study of Form & Space  
Digital Arts  
3D Design  
Calligraphy  
History of Arts  
Aesthetics  
Sculptural Composition

## Creative Sculpture

Sem I - II



Head Study  
Study From Antique  
Drawing From Nature  
Life Study in Clay  
History of Arts  
Aesthetics

## Portrait Sculpture

Sem I - II







# CONSTITUENT INSTITUTIONS



MIT School of Engineering



Maharashtra Academy of Naval Education & Training



MIT Institute of Design



MIT School of Food Technology



MIT School of Bioengineering Science & Research



MIT College of Management



MIT School of Architecture



MIT International School of Broadcasting & Journalism



MIT School of Fine Arts & Applied Art



MIT Vishwashanti Sangeet Kala Academy



MIT School of Film & Television



MIT School of Drama



MIT School of Education & Research



Maharshi Veda Vyas MIT School of Vedic Sciences



MIT School of Humanities



MIT School of Holistic Development



MIT School of Corporate Innovation & Leadership



MIT Centre for Future Skills Excellence



|| Innovate India ||  
AIC-MIT ADT  
Incubator Forum



MIT School of Indian Civil Services

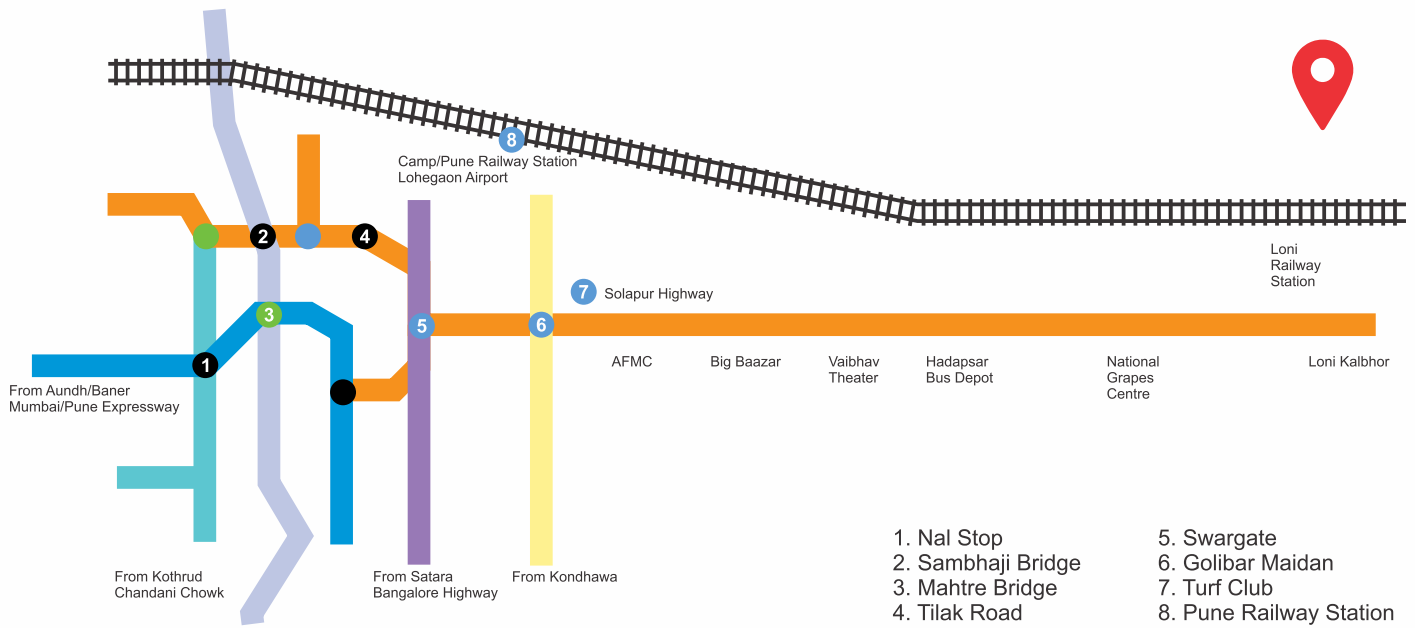


MIT School of Fine Arts  
& Applied Arts



MIT-ADT  
UNIVERSITY  
PUNE, INDIA  
A leap towards World Class Education

## How to reach:



Add: Rajbaug, Next to Hadapsar, Pune - Solapur Highway,  
Loni Kalbhori, Pune - 412201 (MS) India.  
Tel: +91 83084 55300, 91122 19015 | Web: [www.mitsofa.edu.in](http://www.mitsofa.edu.in)



MIT-SOFA

