



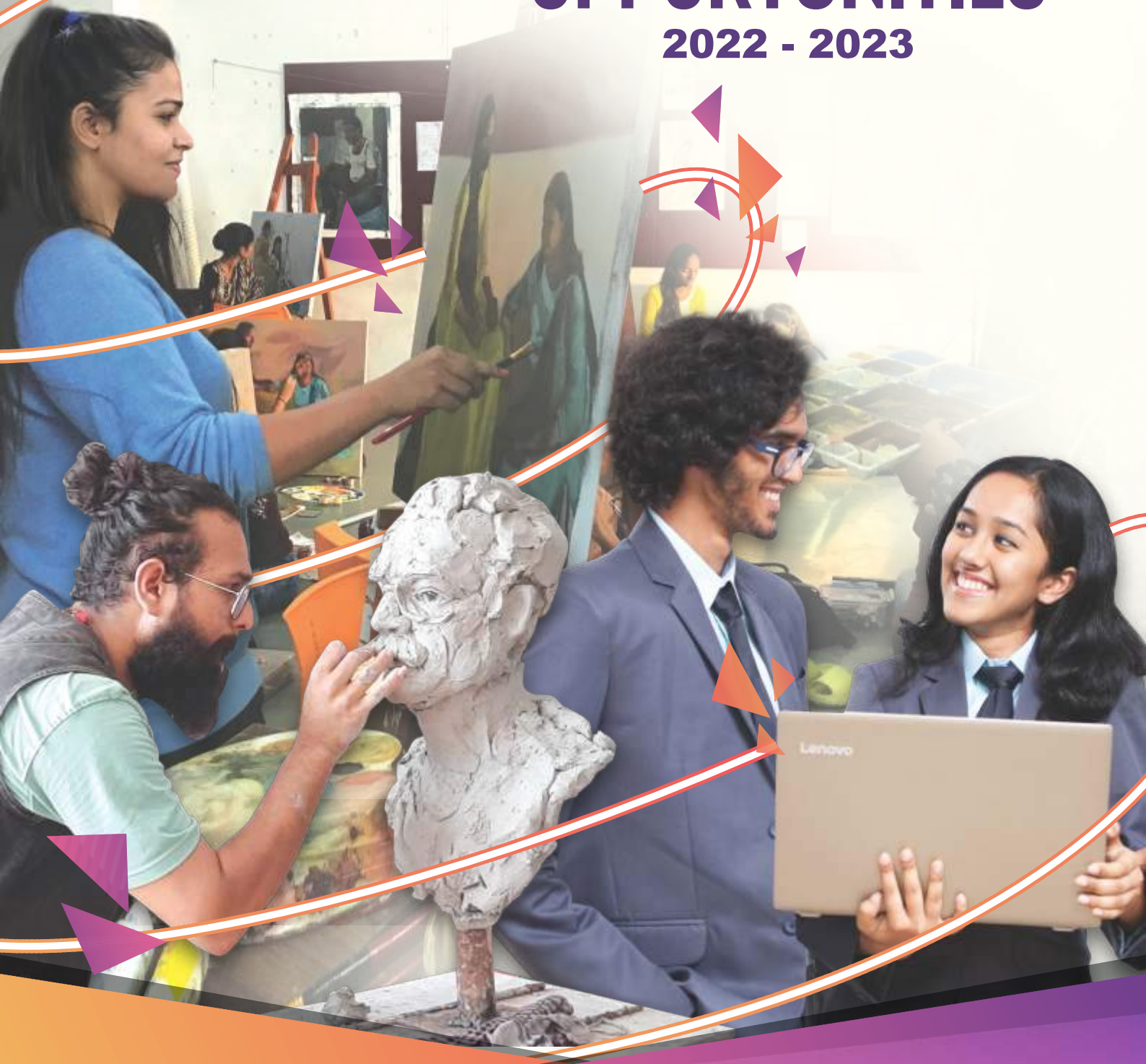
MIT School of Fine Arts
& Applied Arts



MIT-ADT
UNIVERSITY
PUNE, INDIA
A leap towards World Class Education

INFINITE IMAGINATION ENDLESS OPPORTUNITIES

2022 - 2023



MIT GROUP OF INSTITUTIONS, PUNE

MIT Group of Institutions, Pune is one of the most prestigious groups in the academic sector known for its unique blend of value-based professional education in the areas of Technology, Medicine & Health Care, Schools, Management & so on. Maharashtra Institute of Technology, the flagship institute of MIT Group of institutions, Pune was established in the year 1983, under the aegis of Maharashtra Academy of Engineering and Educational Research or better known as MAEER, Pune.

MIT is one of the first nine private Engineering institutions in Maharashtra. It is the culmination of Hon'ble Dr. Vishwanath D. Karad's vision, the Founding Father of MIT Group of Institutions, Pune that quality education should reach asses and be made available to every merit holder irrespective of one's class, creed or religion.

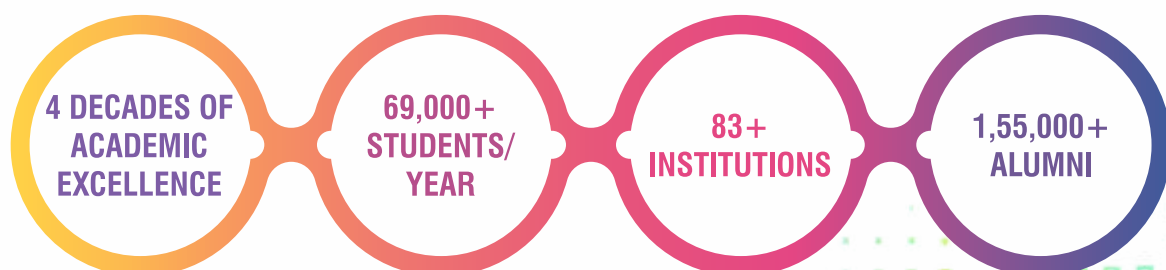
The four-decade long journey of MAEER's MIT epitomizes the relentless pursuit of quality and excellence in the name of commitment and dedication, the nutriment of value and discipline, the quest of science and spirituality and in the enrichment of research and education. The academicians associated with MIT ADT are committed not only to imparting knowledge but also augment the proficiency in their various fields. MIT guides students to achieve their dreams and potential in this multi- disciplinary institute that weaves a mosaic of integrity, commitment and dedication. Carrying forward the baton of a new tomorrow and contributing to the industrial and economic growth of the society and nation at large, MAEER's MIT continues to build the gateway to student successful careers.

MIT Art Design and Technology University (MIT ADT University), with its motto, a leap towards world class education, is established by the renowned MIT Group of Institutions. It is a UGC recognised multi- disciplinary University located on the 125 acres of campus at Raj Baugh, Loni Kalbhor, which was previously owned by late legendary actor of Indian Hindi Cinema Raj Kapoor.

The University campus is an embodiment of peace, serenity and tranquillity; aesthetically erected on the banks of Mula-Mutha river with its architecture ideation inspired from matrix of Saptarishi, Saptarang and Saptaswar. The magnificent world class state-of-the-art infrastructure equipped with modern amenities, is a fully residential campus facility that leads MIT ADT University to be one of the premium campuses.

MIT ADT University is a multi- disciplinary University which offers programs at under graduate, post graduate and doctorate level in Fine Arts, Design, Conventional Engineering branches in Information Technology, Computer Science and Engineering, Mechanical, Civil, Aerospace Engineering Management, Marine Engineering, Bioscience Engineering, Food Technology, Film and Television as well as Broadcasting and Journalism and in Education as well. Most of the programs are designed to satisfy the current needs of the specific industry.

With a vision of Holistic Development, the University has designed compulsory core credits to foster the complete campus transformation of students as winning personalities or corporate leaders, social transformers & nation builders.



MIT ART, DESIGN & TECHNOLOGY UNIVERSITY



VISION

Promotion of creative arts through innovation and research to meet global standards.



MISSION

To create a world-class innovative artist, who can lead the creative industry at globally. Collaborations with the Industry to bridge the Gap between Industry and Academics. To produce creative designers for effective communication to serve the society.

**RANKED
TOP**

**PRIVATE UNIVERSITY
IN INDIA UNDER
ENGG. CATEGORY**



**BEST UNIVERSITY
CAMPUS**
Awarded by
ASSOCHAM, New Delhi

5 STAR RATING



**BY MINISTRY OF EDUCATION
GOVT. OF INDIA TO
INSTITUTION'S INNOVATION
COUNCIL MIT-ADTU, Pune**

**RANKED
26th**

**IN ARIIA - ATAL RANKING
ON INSTITUTION'S
INNOVATION
ACHIEVEMENT 2020**





OUR SOURCE OF INSPIRATION

Hon'ble Prof. Dr. Vishwanath D. Karad

Founder, MAEER's MIT Group of Institutions, Pune
President, MIT Art, Design & Technology University,
Pune, India

MIT Art Design and Technology University (MIT ADT University) is a place where creativity and innovation coexist. MIT ADT has been established under the flagship of the prestigious MIT Group of Institutions. It is a UGC recognized multidisciplinary University and has been bestowed with the 'Best Campus Award' by ASSOCHAM.

MIT ADT spans across a vast green stretch of 125 acres of land at Vishwaraj Baugh Loni, Kalbhor, Pune.





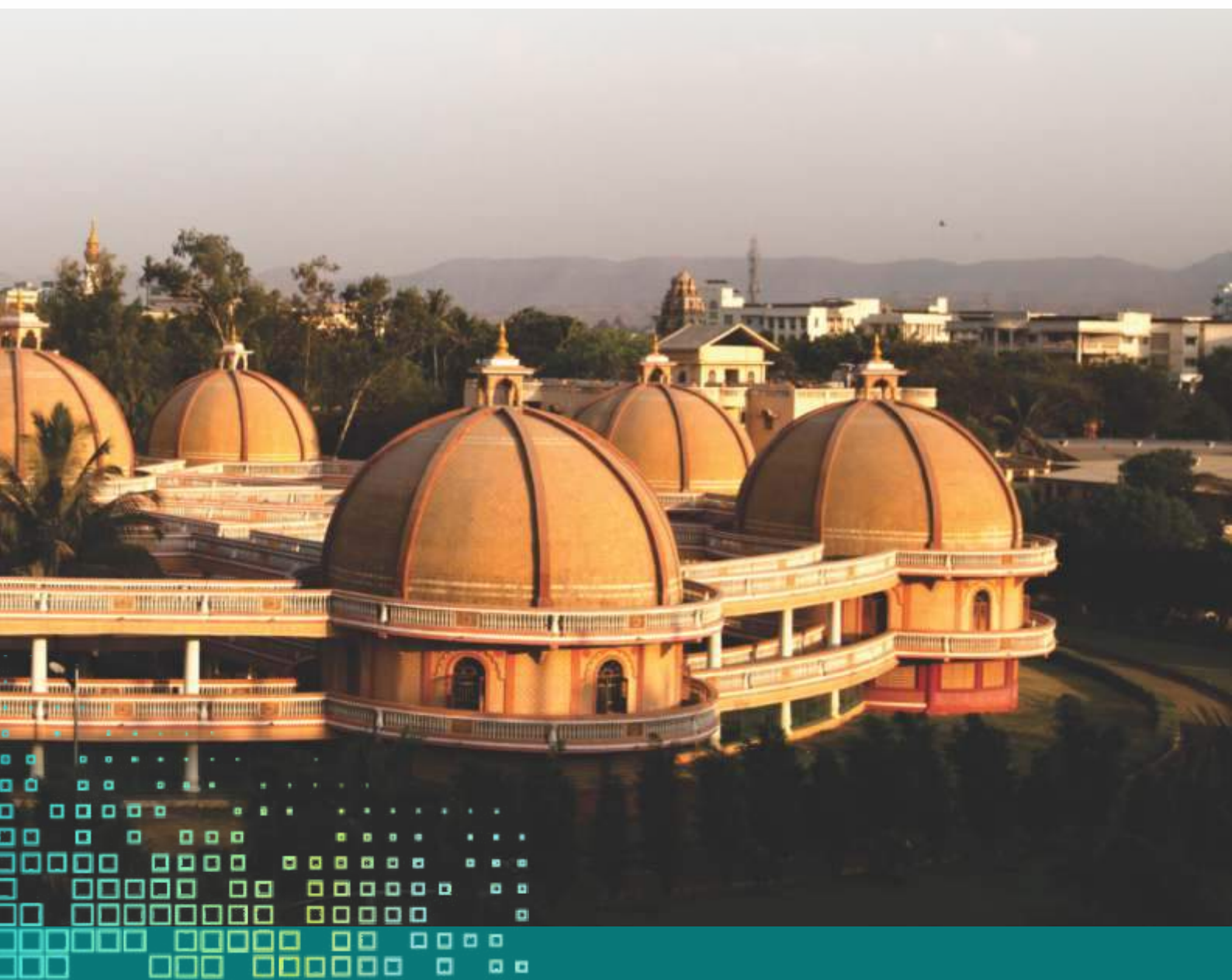
LEADERSHIP

Prof. Dr. Mangesh T. Karad

Executive President & Vice Chancellor
MIT Art, Design & Technology University, Pune

Dr. Mangesh Karad, a towering personality with exceptional leadership qualities demonstrates remarkable vigor and zeal at every task that he undertakes here at MIT-ADT University. The field of Art & Design and its related disciplines have seen revolution since the emergence and integration of technology in the learning curve and has been at the center in propelling education to new levels. MIT ADT offers a large number of programs both at the Under-graduate, Post-graduate levels and PhD levels. MITADT University, a leading

futuristic multi-disciplinary University with a unique blend of Art, Design & Technology programmes, prepares students for the future through its cutting-edge programmes and grooms them for their prospective workplaces through holistic education.





Prof. Dr. Anant Chakradeo

Pro-Vice Chancellor
MIT-ADT University, Pune

Prof. Dr. Anant is a hardcore Engineering Postgraduate having a good innovative mind. A person with a very cool head on his young shoulders is known for his innovative and creative ideas in education. After spending 6 years in small and medium scale industry, he joined MIT in 1993. He has also worked on many industrial projects dealing with tool design, product design and development. He has visited Italy, France, Germany, China and Malaysia for attending various conferences and meetings. He has habit of Dreaming about the new ventures and through his hard-work he conceptualizes those nicely and effectively. In-fact MIT ID is the brain child of Prof. Anant. He further aims to establish a 'Design Habitat' which will have facilities of learning in the areas of Fine arts, Design, Architecture. He also has plans to start giving services to the industry and society in these areas through 'MIT Industrial Design Centre'.



Mrs. Jyoti Dhakne

Executive Director
MIT-ADT University, Pune

She is a woman of distinct vision and a fountain head of illuminating ideas. We, at MIT School of Fine Arts and Applied Arts, are determined to provide every individual the creative and technical skills needed to thrive in today's art and communication world. MIT has been nurturing technology for last 40 years and this institute has created its bench mark in this field. Here, you will start by mastering the foundations necessary to compose, design, draw, paint, sculpt as you broaden your artistic point of view and define your vision in the field of art. The recognition for the University has fueled inception of many other specialised and novel programs such as Aerospace Engineering, Architectural Design, Project Construction, Infrastructure Management, Energy Engineering and Vedic Studies. The multi-disciplinary campus is a true reflection of the beliefs and values imbibed by the Father Founder Prof. Dr. Vishwanath D. Karad.

GOVERNING BODY

Prof. Dr. Vishwanath D. Karad

Founder, Trustee & Chief Patron -
MAEER's MIT Pune, UNESCO Chair Holder

Prof. Rahul Karad

Executive President & Managing Trustee MAEER

Dr. Suchitra Nagare

Jt. Managing Trustee & Jt. Treasurer

Mr. Munir Sayyed

Asst. Vice President, Reliance Jio Labs

Padma Shree Dr. G.D Yadav

Former Vice Chancellor, ICT, Mumbai

Dr. Mahesh Chopade

Registrar, MIT-ADTU

Prof. Dr. Mangesh T. Karad

President & Trustee - MAEER &
Executive President, MIT-ADTU

Prof. Prakash Joshi

Trustee & Patron, MAEER, Pune

Shri Vinayak Ghaisas

Trustee, MAEER

Padma Shree A.S. Kiran Kumar

Former Chairman, ISRO

Dr. Anant Chakradeo

Pro Vice Chancellor, MIT-ADTU

BOARD OF MANAGEMENT

Prof. Dr. Mangesh T. Karad

Vice Chancellor

Shri Vinayak Ghaisas

Member, Governing Body

Mrs. Swati Chate

Nominated by Sponsoring Body

Dr. Ramchandra Pujeri

Dean, Faculty of Management

Dr. Ramakant Kaplay

Teacher Nominated by Sponsoring Body

Dr. Virendra Shete

Teacher Nominated by Sponsoring Body

Ms. Nayana Godse

Chief Finance & Accounts Officer,
Special Invitee

Prof. Dr. Anant Chakradeo

Pro Vice Chancellor

Mrs. Jyoti Dhakane

Nominated by Sponsoring Body

Prof. Dr. Sunita Karad

Nominated by Sponsoring Body

Prof. Dr. Mohit Dubey

Dean, Faculty of Research & Innovation

Prof. Amit Deshmukh

Teacher Nominated by Sponsoring Body

Dr. Dnyandeo Neelwarna

Chief Finance & Accounts Officer,
Special Invitee

Dr. Mahesh Chopade

Registrar



MIT SOFA

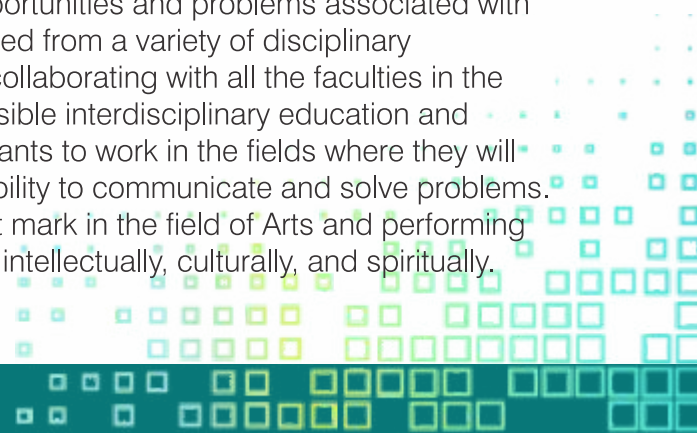
SCHOOL OF FINE ARTS & APPLIED ARTS



Prof. Dr. Milind Dhobley

Dean, Faculty of Arts,
Fine Arts & Performing Arts
MIT-ADT University, Pune

As the Dean of Faculty of Arts, Fine Arts and Performing Arts, it gives me great pleasure to welcome creative students to our esteemed organization. A highly engaged artistic vision has been at the core of the work and identity of MIT Art Design and Technology University, since its inception. We are committed to the principle that the opportunities and problems associated with this emerging paradigm are complex and best approached from a variety of disciplinary standpoints. Faculty of Fine Arts and Performing Arts is collaborating with all the faculties in the University to ensure that every student gets the best possible interdisciplinary education and experience. Our main motto is to educate and train aspirants to work in the fields where they will be valued both for their knowledge, skills, and for their ability to communicate and solve problems. We proudly state that our students will make a prominent mark in the field of Arts and performing arts education and will be nurtured to grow aesthetically, intellectually, culturally, and spiritually.



ABOUT MIT SCHOOL OF FINE ARTS & APPLIED ARTS

MIT School of Fine Arts & Applied Arts, aims at providing the highest standard of art & design education so that students gain a strong foundation in the artistic tradition via both established & new media, thus enriching their capacity for communication & expression as a whole. Our vision is to help students think, research, & communicate clearly, equipping them with intellectual skills & academic abilities to develop a stimulating & rewarding career. It offers an incredible array of academic programs; a diverse, committed & accessible faculty; sophisticated facilities; & an unusual emphasis on experiential learning and project-based learning.



ACADEMIC FACULTY - SOFA



Tushar Panke
HOD Applied Arts



Mahendra Potdar
HOD Fine Arts



Chaitanya Gokhale
Asso. Professor



Dnyaneshwar Jagadale
Asso. Professor



Shilkumar Kumbhar
Asst. Professor



Prasad Nikumbh
Asst. Professor



Avni Jindal
Asst. Professor



Dipankar Goswami
Asst. Professor



Uttam Janwade
Asst. Professor



Nitin Jaswal
Asst. Professor



Swapnil Bhamare
Asst. Professor



Mandar Pardikar
Asst. Professor



Prasad Pawar
Asst. Professor



Mukta Pusalkar
Asst. Professor



Anupam Mishra
Asst. Professor



Dr. Anjali Bhamare
Asst. Professor



Bhagyashree Manjrekar
Asst. Professor



Geetanjali More
Asst. Professor



PROGRAMMES OFFERED

APPLIED ARTS VISUALIZE THE FUTURE

A specially designed curriculum helps you enhance your drawing skills and prepares you to understand the conceptual, creative process underlying courses that balance visual exploration, theory, applications, and technical design skills. A balance of visual exploration, theory and applied projects will enable you to explore creative and effective visual design solutions and will lead you to exciting career opportunities. We help you -find solutions in branding, copywriting, graphic design, photography, motion graphics, interaction design, packaging, 3D design, web design, information design, unconventional advertising, design in advertising, ideation, and innovation in visual communication.



PAINTING

REPAINT THE WORLD



The range of innovative programs offered in MIT School of Fine Arts and Applied Arts gives you a panoramic perspective opening the floodgates for new methods of visual communication and expression. Here you can create art using centuries-old methods or by pushing the boundaries of digital creativity. From Conceptual Art to Contemporary Fine Art, you are taught how to present your -finished pieces using a mixed range of media. You work in well-equipped, modern classrooms, studios, and have numerous opportunities to exhibit your

work on campus (in a variety of galleries and student shows) or off-campus at State and National level. Example skills learned include Painting and Drawing, Sculpture, Printmaking and portraiture.



SCULPTURE SHAPE THE FUTURE

The Sculpture program establishes a framework that encompasses the material, historical & theoretical conditions of sculpture where students are supported to develop their own practice. Our purpose-built studios serve as both working studios and exhibition spaces. Sculpture staff members are engaged in a wide range of research interests that feed into the teaching spectrum and this enhances & informs the discussions around the making and exhibiting of work produced by students. We believe in a very open approach to what is considered sculpture within the -field of contemporary art and encourage you to work at the margins of the discipline as well as at the core.



Bachelor of Fine Arts - BFA

Specialisation	Intake	Course Duration
Applied Arts	90	4 years
Painting	15	4 years
Sculpture	5	4 years

Master of Fine Arts - MFA

Applied Arts	15	2 years
Painting	15	2 years
Sculpture	5	2 years
Art Therapy	20	2 years

MFA - Professional (Program for working professional)

MFA - Professional	5	3 years
--------------------	---	---------

SCHOOL OF HOLISTIC DEVELOPMENT



Creating Winning Personalities And Comprehensive Global Professionals

Philosophy of School of Holistic Development:

MIT ADT University (MIT ADTU) endeavours to provide world class, value based high quality education through all its constituents. MIT ADT University aims to create and nurture the dynamic personality of student to build winning personalities and comprehensive global professionals

enabling them to meet challenges of career as well as life with skills, sensibility and sense of responsibility towards society and humanity. School of Holistic Development emphasizes on enhancing employability of students by building skills, competencies and multiple intelligence, character, values of life through integral education in five dimensional approach to prepare the students for career and life by empowering them to contribute remarkably to society and practice.

Programmes offered:

Department of Communication and Language Studies / Department of Health, Spirituality and Value education / Department of Creative and Performing Arts Studies / Department of Innovation & Entrepreneurship and Technology & Management Studies / Department of Professional Personality Development.

RAGGING ACT, 1999 (MS)

Ragging within or outside of any educational institution is prohibited as per the Govt. of MAHARASHTRA PROHIBITION OF RAGGING ACT, 1999 (MAHARASHTRA ACT No. XXXIII OF 1999). According to the Maharashtra Prohibition of Ragging Act, 1999, "Ragging means display or disorderly conduct, doing of any act which causes or is likely to cause physical or psychological harm or raise apprehension or fear or shame or embarrassment to a student in any educational institution". The sections 04 / 05 / 06 are as follows:

PENALTY FOR RAGGING / DISMISSAL OF STUDENT / SUSPENSION OF STUDENT

HELPLINE - Email: helpline@antiragging.in | Phone: 1800-180-5522

Admission Document List

Students should submit following documents in ORIGINAL along with 2 Sets of photocopies at the time of admission

- 1) 2 passport size photograph
- 2) Application form hard copy*
- 3) Acknowledgement received by MIT ADT for payment of form fees*
- 4) 10th Mark sheet/certificate*
- 5) 12th Mark sheet/certificate*
- 6) Leaving corticated*
- 7) CET mark sheet (for those who have appeared in MH-AAC-CET)
- 8) Aadhar card *
- 9) Domicile Certificate*
- 10) Caste certificate (If applicable below doc can be submitted)
- 11) Non-creamy layer certificate
- 12) Caste Validity certificate
- 13) Migration for OMS (Other than Maharashtra States) students*

Cancellation Policy

- 1) 10% of the aggregate fee will be charged as processing charges & will be deducted from the refundable amount.
- 2) Any instrument/equipment/gadget or books & stationery purchased from/through the Institute is not refundable.
- 3) In case of any dispute regarding this fee policy, the decision of the Vice Chancellor of MIT-ADT University would be -final & binding.
- 4) If the student has taken admission by paying token amount & subsequently apply for cancellation of admission, then the concerned student has to pay the deficit amount, if any, of refund fees percentage, then only the original documents will be returned.



FACILITIES



Spacious Studio



Well Equipped Computer Lab



State of Art Library



Sports Activity



Sports Complex



Hostel



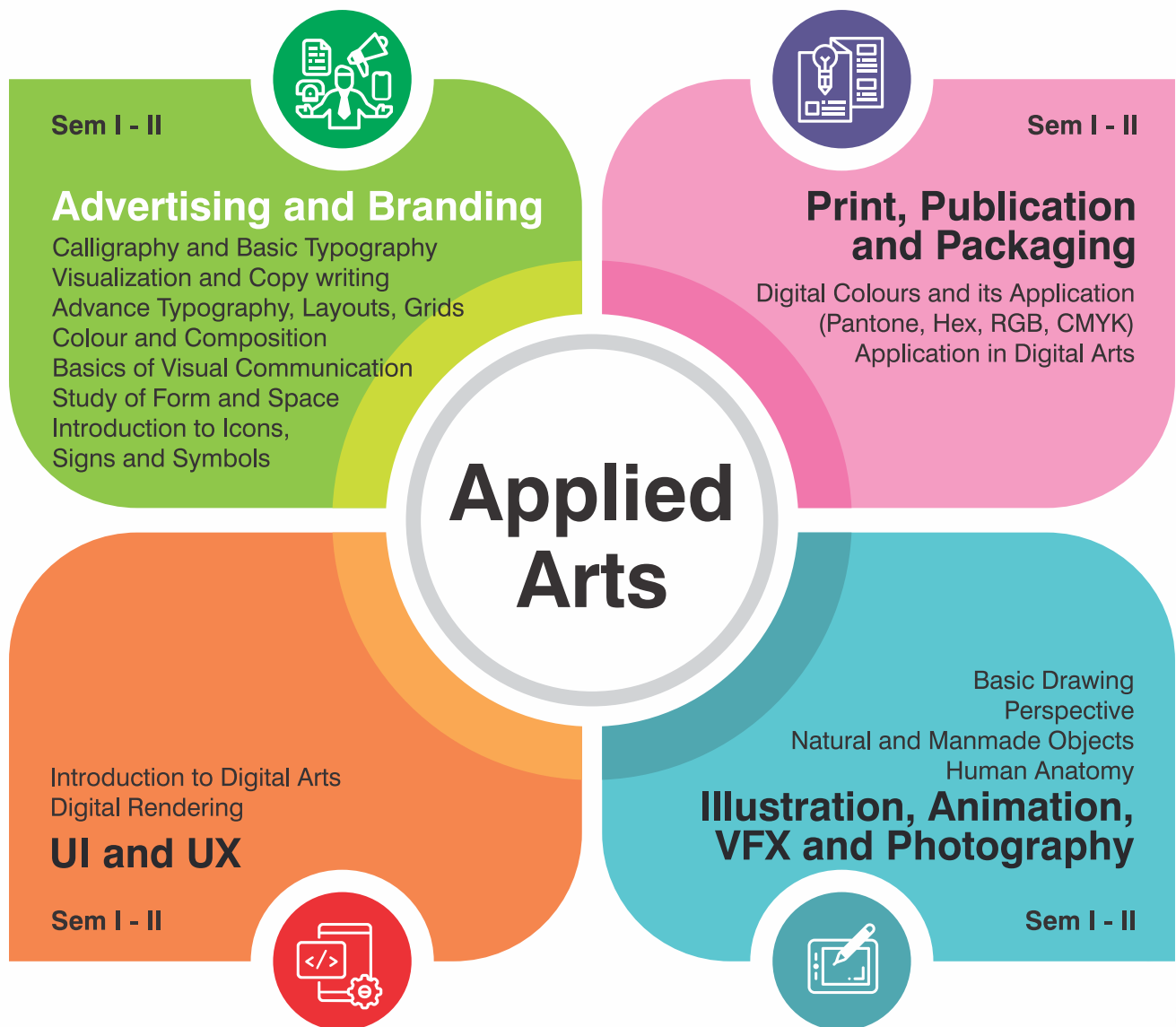
Canteen / Mess



Transportation

SYLLABUS AT A GLANCE

MITSoFA offers a dynamic and well-structured credit based syllabus that is at par with industry standards. At MIT SOFA, we offer experiential project-based learning and career-oriented courses to learning graduates which include internships, interdisciplinary studies, electives and research. Further, the syllabus is prepared in consultation with esteemed senior members from different industries to align with present industry requirements. Our vision is to help students think, research, and communicate clearly, equipping them with intellectual skills and academic abilities to develop a stimulating and rewarding career.





Print Making
Sem I - II
Introduction
Relief and Dry Point
Engraving and Etching
Viscosity and Serigraph



Sem I - II
Creative Painting
Colour & Composition
Study of Form & Space
Digital Arts
3D Design
Calligraphy
History of Arts
Aesthetics



Sem I - II
Portrait Painting
Drawing
Study From Life
Drawing From Nature
History of Arts
Aesthetics

**Painting
Fine Arts
Sculpture**

Colour & Composition
Study of Form & Space
Digital Arts
3D Design
Calligraphy
History of Arts
Aesthetics
Sculptural Composition
Creative Sculpture
Sem I - II



Head Study
Study From Antique
Drawing From Nature
Life Study in Clay
History of Arts
Aesthetics
Portrait Sculpture
Sem I - II



EVENTS

INDIAN TRADITIONAL STUDIES

An ITS is defined as an On-campus/off-campus activity, undertaken by students along with faculty for the purposes of teaching/research the cycle of business /transactions /activities. This can range from low involvement visits to places within the local area (Within University, Printing press, Industry visits etc.) to taking part in higher involvement activities, overnight stays, traveling within country/abroad, or a combination of these. Indian Traditional Studies employs a holistic approach that consciously applies a methodology from more than one discipline (integration) to examine social, moral, spiritual, cultural and creative art forms in a micro environment and enables students to engage with and explore visual, tactile and other sensory experiences and how to recognize, interrelate and communicate ideas and meanings.

ITS-BHILWARA, RAJASTHAN



ITS-RAGHURAJPUR, ORISSA



ITS-THANJAVUR, TAMIL NADU



ART EXHIBITION

Kaari, in Sanskrit, means "Artist". KAARI is an Annual Art Exhibition in which students are encouraged to display their talent and demonstrate their position and capabilities as young and emerging artists and visual communicators of India. Our vision behind Kaari is to give our visitors an insight into the minds of young creative artists, their interesting thought processes and equally interesting outcomes. Kaari is a great opportunity to appreciate new talent and offers a great arena for students to explore their ideas that have emerged through re-visiting our traditional and cultural practices, from investigating contemporary thinking on paintings and designs and from more open, speculative, imaginative and artistic visions of the future.



WORKSHOP

WORKSHOP ON CALLIGRAPHY

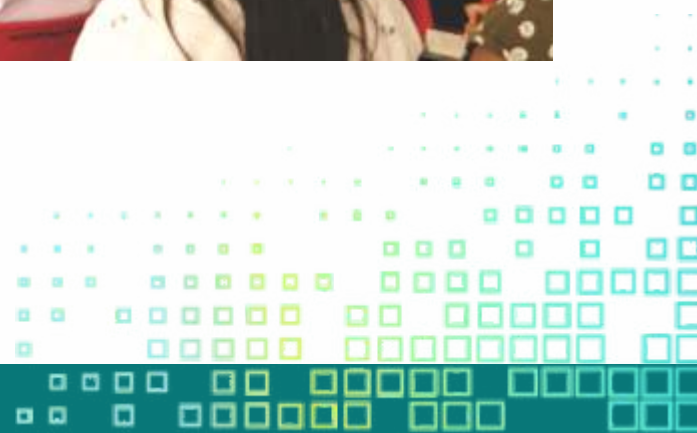


Calligraphy Workshop by Mr. Achyut Palav

WORKSHOP ON INFOGRAPHICS



Wayfinding Workshop by Prof. Paresh Chaudhari



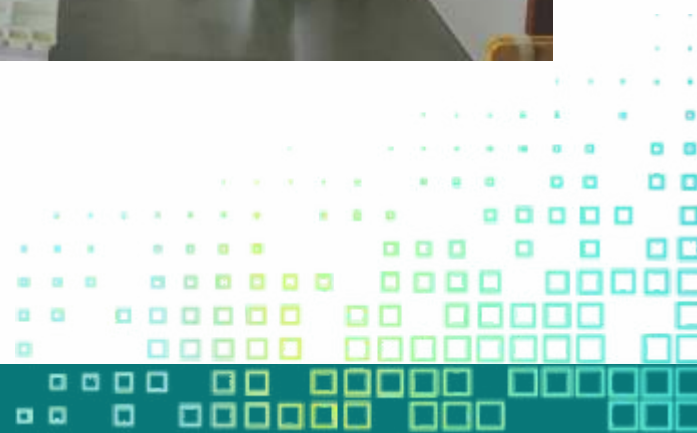
WORKSHOP ON ILLUSTRATIONS



Faculty and Students with German Illustrator Mr. Alyuscha Blau



Illustration Workshop by Harshvardhan Kadam



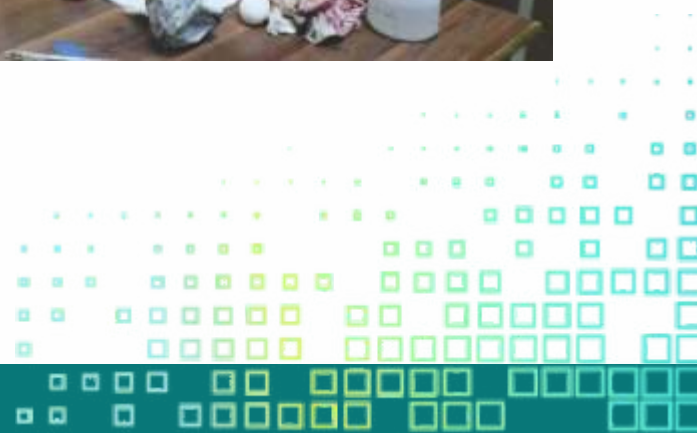
WORKSHOP ON CREATIVITY IN ADVERTISING



Guest lecture by industry expert Prof. Anil Uzgare



Workshop on restoration and conservation of arts



COMPANY CONNECTS

Internship and Placements

The Internship program at MIT School of Fine Arts and Applied Arts has been integrated in our curriculum as a mandatory 6 Month long project so as to help students identify and plan their career goals and paths. Minimum package starts from 3L and ranges to 8.5L.



EXTENTIA

properly

dVIO

left | right | mind

pichkaari



ENVISIONARD

kritii

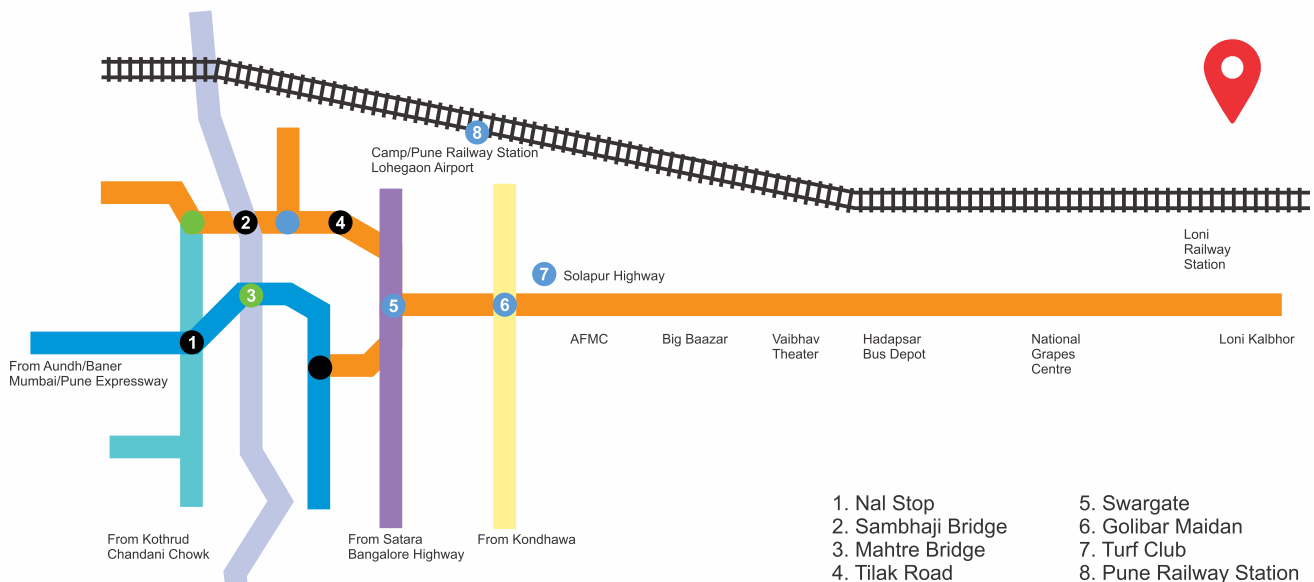
BAJAJ
FINSERV

METRO

MARKETS

elasticrun

How To Reach



Add: Rajbaug, Next to Hadapsar,
Pune - Solapur Highway, Loni Kalbhor,
Pune - 412201 (MS) India.
Tel: +91 83084 55300, 91122 19015
Web: www.mitsofa.edu.in



MIT-SOFA

